

Performance. Quality. Reliability



TRAIL-LINK

**QUALITY PERFORMANCE
FROM FRONT TO BACK**

TABLE OF CONTENTS

DESCRIPTION	PAGE
SECTION 1: ELECTRICAL SUZIS	5
SECTION 2: ANTI-KINK AIR COILS & ACCESSORIES	16
SECTION 3: EBS COILS	25
SECTION 4: BATTERY CHARGING PRODUCTS	30
SECTION 5: PLUGS	36
SECTION 6: SOCKETS	41
SECTION 7: ACCESSORIES	47
SECTION 8: LIGHTS	57
SECTION 9: IN-STORE/POINT OF SALE	66

BACKGROUND



Trail-Link is a family operated business established in 2004 when the members started developing products based on previous experience in the transport industry.

Trail-Link's product range started with the development of a high quality electrical suzi with moulded plugs and a universal catch assembly providing LOCK-IN of these connectors.

The range has since expanded due to industry demand to include plugs, sockets, harnesses and accessories which are now fitted as standard on leading OE brands.

Trail-Link's mission is to offer solutions for all electrical connector requirements. Our vision is to continue to do so.

SECTION 1: ELECTRICAL SUZIS

ELECTRICAL SUZIS

TRAIL-LINK's electrical suzis are produced from high quality polyurethane, selected for its unbeatable wear-and-tear resistance. Our coils are weather, oil, grease, abrasion and UV resistant and have excellent recoil memory to reduce sag.

TRAIL-LINK commonly manufactures two types of 7Pin plugs for the Australian sector:

- **DIN plugs:** Trailer plug, aka 7Pin round plugs, aka "light duty". Conforms to ISO 1724/DIN 72577. Wired to ISO 1724. Complies with ADR 42/04.
- **SAE/EURO plugs:** Euro plugs, aka "heavy duty" 7Pin plugs. Conforms to SAE J560/ISO 1185 standards. Wired to ISO1185 (purple tag) or wired to AS 4735 (blue tag). Complies with ADR 42/05 and ADR 42/04.

During production all components and completed units are tested to ensure faultless function and quality.

Our electrical suzis offer the ideal PLUG-IN & GO solution for any prime mover/trailer combination. The working lengths of the suzis range from 1.7m to 7m. Custom configurations are possible. Please contact us directly to discuss customised products.



SECTION 1: ELECTRICAL SUZIS

WIRING DIAGRAMS

TABLE A

AUS WIRING		
CONTACT/FUNCTION	COLOUR	NO.
Left turn/Hazard	Yellow	1
Reversing Signal	Black	2
Earth/Return/Ground	White	3
Right turn/Hazard	Green	4
Service brakes/Spare	Blue	5
Stop	Red	6
Number plate/Markers	Brown	7

TABLE B

HEAVY DUTY WIRING (AS 4735)		
CONTACT/FUNCTION	COLOUR	NO.
Common Earth Return	White	1
Left-hand Rear Position, Clearance and Marker Lamps	Black	2
Left-hand Indicator	Yellow	3
Stop	Red	4
Right-hand Indicator	Green	5
Right-hand Rear Position, Clearance and Marker Lamps + Rego Lamp	Brown	6
Reversing Signal	Blue	7

TABLE C

EURO ISO 1185 WIRING		
CONTACT/FUNCTION	COLOUR	NO.
Earth/Return/Ground	White	1
Left tail/Number plate	Black	2
Left turn/Hazard	Yellow	3
Stop	Red	4
Right turn/Hazard	Green	5
Right tail/Number plate	Brown	6
Trailer brake control	Blue	7

TABLE D

EURO ISO 1185 WIRING			AUS WIRING		
CONTACT/FUNCTION	COLOUR	NO.	CONTACT/FUNCTION	COLOUR	NO.
Earth/Return/Ground	White	1	Left turn/Hazard	Yellow	1
Left tail/Number plate	Black	2	Number plate/Markers	Black	2
Left turn/Hazard	Yellow	3	Earth/Return/Ground	White	3
Stop	Red	4	Right turn/Hazard	Green	4
Right turn/Hazard	Green	5	Service brakes/Spare	Blue	5
Right tail/Number plate	Brown	6	Stop	Red	6
Trailer brake control	Blue	7	Number plate/Markers	Brown	7

TABLE E

HEAVY DUTY WIRING (AS 4735)			AUS WIRING (AS 2513)		
CONTACT/FUNCTION	COLOUR	NO.	CONTACT/FUNCTION	COLOUR	NO.
Common Earth Return	White	1	Left-hand Indicator	Yellow	1
Left-hand Rear Position, Clearance and Marker Lamps	Black	2	Reversing Signal	Blue	2
Left-hand Indicator	Yellow	3	Common Earth Return	White	3
Stop	Red	4	Right-hand Indicator	Green	4
Right-hand Indicator	Green	5	Spare (powered source from Pin 2 on AS4735)	Black	5
Right-hand Rear Position, Clearance and Marker Lamps + Rego Lamp	Brown	6	Stop	Red	6
Reversing Signal	Blue	7	Number plate/Markers	Brown	7

SECTION 1: ELECTRICAL SUZIS

SHORT TAIL POLY-U ELECTRICAL SUZI - 7 CORE - 2XDIN MOULDED PLUGS (3.6M)

PART# 100-203



SPECIAL FEATURES

- Polyurethane coil
- 2 x Moulded DIN plugs
- Wire sizes: 6 x 1.5mm² + 1 x 2.5mm²
- Working length = 3.6m

FOR WIRING DIAGRAM, PLEASE SEE **TABLE A** ON PAGE 6

SHORT TAIL POLY-U ELECTRICAL SUZI - 7 CORE WITH MOULDED PLUGS -
1X SAE/HEAVY DUTY + 1X DIN (3.6M)

PART# 100-205



SPECIAL FEATURES

- Polyurethane coil
- 1 x Moulded DIN plug
- 1 x Moulded SAE/EURO plug
- Wire sizes: 6 x 1.5mm² + 1 x 2.5mm²
- Working length = 3.6m
- Adapts from 7Pin SAE/EURO (e.g. Scania, Volvo, Mercedes, MAN, IVECO, DAF) to 7Pin DIN
- **NOTE: reverse on Pin 7 - Blue**

FOR WIRING DIAGRAM, PLEASE SEE **TABLE D** ON PAGE 6

SHORT TAIL POLY-U ADAPTING ELECTRICAL COIL - ADAPTS FROM SAE PLUG
(WIRED TO AS4735) TO DIN PLUG (WIRED TO AS2513)

PART# 100-205-AS



SPECIAL FEATURES

- Polyurethane coil
- 1 x Moulded DIN plug with REVERSE FUNCTION
- 1 x Moulded HEAVY DUTY plug wired to AS4735
- Wire sizes: 6 x 1.5mm² + 1 x 2.5mm²
- Working length = 3.6m
- Adapts from Euro Prime Mover to Australian Trailer with reverse function (7Pin EURO (e.g. Scania, Volvo, Mercedes, MAN, IVECO, DAF) to 7Pin DIN
- **NOTE: reverse on Pin 2 - Black**

FOR WIRING DIAGRAM, PLEASE SEE **TABLE E** ON PAGE 6

SECTION 1: ELECTRICAL SUZIS

SHORT TAIL POLY-U ELECTRICAL SUZI - 7 CORE - 2 MOULDED SAE PLUGS (3.6M)

PART# 100-206



SPECIAL FEATURES

- Polyurethane coil
- 2 x SAE/EURO moulded plugs
- Wire sizes: 6 x 1.5mm² + 1 x 2.5mm²
- Working length = 3.6m
- Complies with new ADR 42/05 (AS4735 / ISO1185 / SAE J560)

FOR WIRING DIAGRAM, PLEASE SEE **TABLE C** ON PAGE 6
(SEE **TABLE B** IF DRAWING VEHICLE IS WIRED TO AS 4735)

SHORT TAIL POLY-U ELECTRICAL SUZI - 7 CORE - 1XMOULDED DIN PLUG/1X BARE END (3.6M)

PART# 100-204



SPECIAL FEATURES

- Polyurethane coil
- 1 x Moulded DIN plug
- 1 x Bare end for hard-wiring applications
- Wire sizes: 6 x 1.5mm² + 1 x 2.5mm²
- Working length = 3.6m

FOR WIRING DIAGRAM, PLEASE SEE **TABLE A** ON PAGE 6

LONG TAIL POLY-U ELECTRICAL SUZI - 7 CORE - 2 MOULDED DIN PLUGS (4.6M)

PART# 100-503



SPECIAL FEATURES

- Polyurethane coil
- 2 x Moulded DIN plugs
- Wire sizes: 6 x 1.5mm² + 1 x 2.5mm²
- 1m long tail for extended reach
- Working length = 4.6m

FOR WIRING DIAGRAM, PLEASE SEE **TABLE A** ON PAGE 6

SECTION 1: ELECTRICAL SUZIS

LONG TAIL POLY-U ADAPTER COIL - 6X1.5MM+1X2.5MM - 1X DIN PLUG AND 1 X ISO 1185 PLUG - 4.6M

PART# 100-505



SPECIAL FEATURES

- Polyurethane coil
- 1 x Moulded DIN plug
- 1 x Moulded SAE/EURO plug
- Wire sizes: 6 x 1.5mm² + 1 x 2.5mm²
- 1m long tail for extended reach
- Working length = 4.6m
- Adapts from 7Pin SAE/EURO (e.g. Scania, Volvo, Mercedes, MAN, IVECO, DAF) to 7Pin DIN
- **NOTE: reverse on Pin 7 - Blue**

FOR WIRING DIAGRAM, PLEASE SEE **TABLE D** ON PAGE 6

LONG TAIL POLY-U ADAPTING ELECTRICAL COIL - ADAPTS FROM SAE PLUG (WIRED TO AS4735) TO DIN PLUG (WIRED TO AS2513)

PART# 100-505-AS



SPECIAL FEATURES

- Polyurethane coil
- 1 x Moulded DIN plug with REVERSE FUNCTION
- 1 x Moulded HEAVY DUTY plug wired to AS4735
- Wire sizes: 6 x 1.5mm² + 1 x 2.5mm²
- 1m long tail for extended reach
- Working length = 4.6m
- Adapts from Euro Prime Mover to Australian Trailer with reverse function (7Pin SAE/EURO (e.g. Scania, Volvo, Mercedes, MAN, IVECO, DAF) to 7Pin DIN
- **NOTE: reverse on Pin 2 -black**

FOR WIRING DIAGRAM, PLEASE SEE **TABLE E** ON PAGE 6

LONG TAIL POLY-U ELECTRICAL SUZI - 7 CORE - 2 MOULDED SAE PLUGS (4.6M)

PART# 100-506



SPECIAL FEATURES

- Polyurethane coil
- 2 x Moulded SAE/EURO plugs
- Wire sizes: 6 x 1.5mm² + 1 x 2.5mm²
- 1m long tail for extended reach
- Working length = 4.6m
- Complies with new ADR 42/05 (AS4735 / ISO1185 / SAE J560)

FOR WIRING DIAGRAM, PLEASE SEE **TABLE C** ON PAGE 6
(SEE **TABLE B** IF DRAWING VEHICLE IS WIRED TO AS 4735)

SECTION 1: ELECTRICAL SUZIS

LONG TAIL POLY-U ELECTRICAL SUZI - 7 CORE - 1XMOULDED DIN PLUG/1XBARE END (4.6M)

PART# 100-504



SPECIAL FEATURES

- Polyurethane coil
- 1 x Moulded DIN plug
- 1 x Bare end for hard-wiring applications
- Wire sizes: 6 x 1.5mm² + 1 x 2.5mm²
- 1m long tail for extended reach
- Working length = 4.6m

FOR WIRING DIAGRAM, PLEASE SEE **TABLE A** ON PAGE 6

SUPPLEMENTARY SHORT TAIL POLY-U ELECTRICAL SUZI - 7 CORE - 2 MOULDED ISO3731 PLUGS (WHITE) - INVERTED EARTH (3.6M)

PART# 100-206SP



SPECIAL FEATURES

- Polyurethane coil
- 2 x SAE/EURO white supplementary moulded plugs with inverted pin
- Complies with ISO 3731
- Wire sizes: 6 x 1.5mm² + 1 x 2.5mm²
- Working length = 3.6m

SUPPLEMENTARY LONG TAIL POLY-U ELECTRICAL SUZI - 7 CORE - 2 MOULDED ISO3731 PLUGS (WHITE) - INVERTED EARTH (4.6M)

PART# 100-506SP



SPECIAL FEATURES

- Polyurethane coil
- 2 x SAE/EURO white supplementary moulded plugs with inverted pin
- Complies with ISO 3731
- Wire sizes: 6 x 1.5mm² + 1 x 2.5mm²
- 1m long tail for extended reach
- Working length = 4.6m

SECTION 1: ELECTRICAL SUZIS

SHORT TAIL HEAVY DUTY POLY-U ELECTRICAL SUZI - 7 CORE - 2 PLASTIC SAE PLUGS (3.6M)

PART# 110-206



SPECIAL FEATURES

- Polyurethane coil
- Road train spec heavy duty cable
- 2 x plastic SAE/EURO plugs
- Wire sizes: 6 x 4mm² + 1 x 6mm²
- Working length = 3.6m
- Complies with new ADR 42/05 (AS4735 / ISO1185 / SAE J560)

FOR WIRING DIAGRAM, PLEASE SEE **TABLE C** ON PAGE 6
(SEE **TABLE B** IF DRAWING VEHICLE IS WIRED TO AS 4735)

SHORT TAIL HEAVY DUTY POLY-U ELECTRICAL SUZI - 7 CORE - 2 METAL SAE PLUGS (3.6M)

PART# 110-206M



SPECIAL FEATURES

- Polyurethane coil
- Road train spec heavy duty cable
- 2 x metal SAE/EURO plugs
- Wire sizes: 6 x 4mm² + 1 x 6mm²
- Working length = 3.6m
- Complies with new ADR 42/05 (AS4735 / ISO1185 / SAE J560)

FOR WIRING DIAGRAM, PLEASE SEE **TABLE C** ON PAGE 6
(SEE **TABLE B** IF DRAWING VEHICLE IS WIRED TO AS 4735)

LONG TAIL HEAVY DUTY POLY-U ELECTRICAL SUZI - 7 CORE - 2 MOULDED DIN PLUGS (4.6M)

PART# 110-503-MLD



SPECIAL FEATURES

- Polyurethane coil
- Road train spec heavy duty cable
- 2 x moulded DIN plugs
- Wire sizes: 6 x 4mm² + 1 x 6mm²
- 1m long tail for extended reach
- Working length = 4.6m
- Complies with new ADR 42/05 (AS4735 / ISO1185 / SAE J560)

FOR WIRING DIAGRAM, PLEASE SEE **TABLE A** ON PAGE 6

SECTION 1: ELECTRICAL SUZIS

LONG TAIL ADAPTER HEAVY DUTY POLY-U ELECTRICAL SUZI - 7 CORE - 1X METAL SAE PLUG
+ 1X METAL DIN PLUG (4.6M)

PART# 110-505M



SPECIAL FEATURES

- Polyurethane coil
- Road train spec heavy duty cable
- 1 x METAL SAE/EURO plug and 1 x METAL DIN Plug
- Wire sizes: 6 x 4mm² + 1 x 6mm²
- 1m long tail for extended reach
- Working length = 4.6m

FOR WIRING DIAGRAM, PLEASE SEE **TABLE D** ON PAGE 6
(ALSO AVAILABLE IN **TABLE E**)

LONG TAIL HEAVY DUTY POLY-U ELECTRICAL SUZI - 7 CORE - 2 MOULDED SAE PLUGS (4.6M)

PART# 110-506-MLD



SPECIAL FEATURES

- Polyurethane coil
- Road train spec heavy duty cable
- 2 x Moulded SAE/EURO plugs
- Wire sizes: 6 x 4mm² + 1 x 6mm²
- 1m long tail for extended reach
- Working length = 4.6m
- Complies with new ADR 42/05 (AS4735 / ISO1185 / SAE J560)

FOR WIRING DIAGRAM, PLEASE SEE **TABLE C** ON PAGE 6
(SEE **TABLE B** IF DRAWING VEHICLE IS WIRED TO AS 4735)

LONG TAIL HEAVY DUTY POLY-U ELECTRICAL SUZI - 7 CORE - 2 METAL SAE PLUGS (4.6M)

PART# 110-506M



SPECIAL FEATURES

- Polyurethane coil
- Road train spec heavy duty cable
- 2 x METAL SAE/EURO plugs
- Wire sizes: 6 x 4mm² + 1 x 6mm²
- 1m long tail for extended reach
- Working length = 4.6m
- Complies with new ADR 42/05 (AS4735 / ISO1185 / SAE J560)

FOR WIRING DIAGRAM, PLEASE SEE **TABLE C** ON PAGE 6
(SEE **TABLE B** IF DRAWING VEHICLE IS WIRED TO AS 4735)

SECTION 1: ELECTRICAL SUZIS

SHORT TAIL POLY-U POWER COIL - 15 CORE - 2 MOULDED 15PIN PLUGS

PART# 100-803



SPECIAL FEATURES

- Polyurethane 15Core coil
- 2 x MOULDED 15Pin plugs
- Wire sizes: 12 x 1.5mm² + 3 x 2.5mm²
- Working length = 3.6m
- 15 functions (incl DATA pair and second Earth)
- **NOT suitable for EBS applications**

LONG TAIL POLY-U POWER COIL - 15 CORE - 2 MOULDED 15PIN PLUGS

PART# 100-803LT



SPECIAL FEATURES

- Polyurethane 15Core coil
- 2 x MOULDED 15Pin plugs
- Wire sizes: 12 x 1.5mm² + 3 x 2.5mm²
- 1m long tail for extended reach
- Working length = 4.6m
- 15 functions (incl DATA pair and second Earth)
- **NOT suitable for EBS applications**

SHORT TAIL 15PIN TO 7PIN DIN ADAPTER COIL - (3.6M)

PART# 100-303



SPECIAL FEATURES

- Polyurethane coil
- 1 x Moulded DIN plug
- 1 x 15Pin plug (1-7 only)
- Wire sizes: 6 x 1.5mm² + 1 x 2.5mm²
- Working length = 3.6m
- Adapts from EURO 15Pin (Mercedes, Volvo etc.) to 7Pin DIN

FOR WIRING DIAGRAM, PLEASE SEE **TABLE A** ON PAGE 6

SECTION 1: ELECTRICAL SUZIS

LONG TAIL 15PIN TO 7PIN DIN ADAPTER COIL - (4.6M)

PART# 100-303LT



SPECIAL FEATURES

- Polyurethane coil
- 1 x Moulded 7Pin DIN plug
- 1 x Moulded 15Pin plug (1-7 only) on LONG TAIL
- Wire sizes: 6 x 1.5mm² + 1 x 2.5mm²
- 1m long tail for extended reach
- Working length = 4.6m
- Adapts from EURO 15Pin (Mercedes, Volvo etc.) to 7Pin DIN

FOR WIRING DIAGRAM, PLEASE SEE **TABLE A** ON PAGE 6

MINI POLY-U ELECTRICAL SUZI - 7 CORE - 2 MOULDED DIN PLUGS (2M)

PART# 100-703



SPECIAL FEATURES

- Polyurethane coil
- 2 x Moulded DIN plugs
- Wire sizes: 6 x 1.0mm² + 1 x 1.5mm²
- Working length = ±1.7m
- Light duty/recreational applications

FOR WIRING DIAGRAM, PLEASE SEE **TABLE A** ON PAGE 6

SHORT TAIL POLY-U ELECTRICAL COIL (7M) - 2 X MOULDED SAE PLUGS (ISO 1185/ADR42/05)
- 7 METER EXTENDED LENGTH

PART# 100-206-7M



SPECIAL FEATURES

- 7m working length – perfect for retractable skulls!
- Polyurethane cable
- 2 x SAE/Euro moulded plugs
- Complies with ISO 1185/AS4735
- Working length 7m
- Matching length AIR COILS are Part # 200-103-7M

FOR WIRING DIAGRAM, PLEASE SEE **TABLE C** ON PAGE 6
(SEE **TABLE B** IF DRAWING VEHICLE IS WIRED TO AS 4735)

SECTION 1: ELECTRICAL SUZIS

STRAIGHT ELECTRICAL CABLE WITH MOULDED DIN PLUGS

PART# 100-203-STR



SPECIAL FEATURES

- Straight electrical cable
- 2 x Moulded DIN plug
- Wire sizes: 6 x 1.5mm² + 1 x 2.5mm²
- For use as straight electrical cable, along drawbar/ A-frame or between two trailers

FOR WIRING DIAGRAM, PLEASE SEE **TABLE A** ON PAGE 6

STRAIGHT ELECTRICAL CABLE WITH MOULDED SAE PLUGS

PART# 100-206-STR



SPECIAL FEATURES

- Straight electrical cable
- 2 x Moulded SAE plug
- Wire sizes: 6 x 1.5mm² + 1 x 2.5mm²
- For use as straight electrical cable, along drawbar/ A-frame or between two trailers

FOR WIRING DIAGRAM, PLEASE SEE **TABLE C** ON PAGE 6
(SEE **TABLE B** IF DRAWING VEHICLE IS WIRED TO AS 4735)

SECTION 2: ANTI-KINK AIR COILS & ACCESSORIES

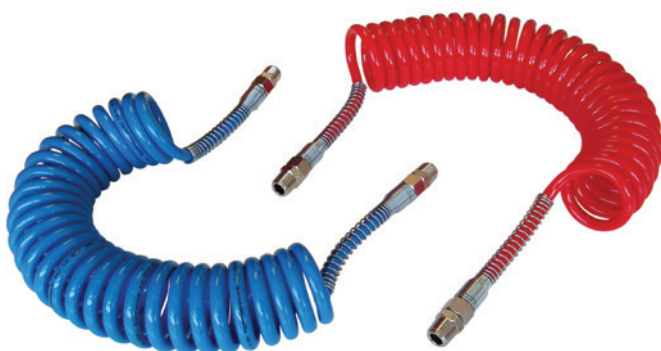
ANTI-KINK AIR COILS & ACCESSORIES

Trail-Link's High Performance air hoses are manufactured from high quality polyurethane to produce an anti-kink, anti-sag and abrasive resistant coil with excellent memory.

Other advantages include high flexibility, superior cold weather operation and increased burst pressure to ensure a longer service life and guaranteed improved performance.

SHORT TAIL POLY-U HI-PERFORMANCE AIR COILS - PAIR - 2 X SHORT TAILS - 1/2" BSPT (3.6M)

PART# 200-103



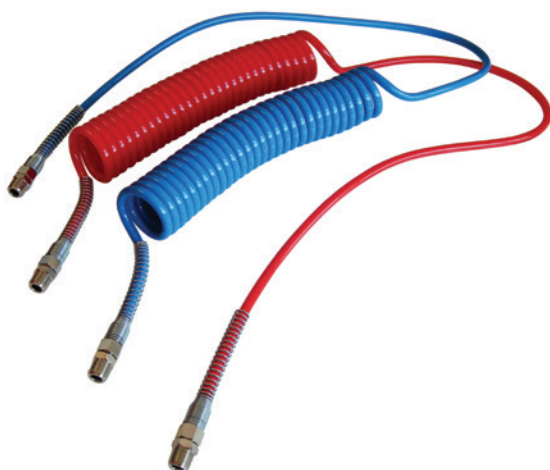
SPECIAL FEATURES

- Tube size: 12mm OD x 7.6mm ID
- Half inch BSPT fittings with spring guards
- Temperature range -40°C to 75°C
- 3.6m working length
- Available with 1/4" BSPT fittings on request
- NOW also available in yellow or black for auxiliary air supply
 - 200-103-YEL
 - 200-103-BLK



LONG TAIL POLY-U HI-PERFORMANCE AIR COILS - PAIR - 1X1M LONG TAIL - 1/2" BSPT (4.6M)

PART# 200-203



SPECIAL FEATURES

- Tube size: 12mm OD x 7.6mm ID
- Half inch BSPT fittings with spring guards
- Temperature range -40°C to 75°C
- 1m long tail for extended reach
- 4.6m working length
- Available with 1/4" BSPT fittings on request
- NOW also available in yellow or black for auxiliary air supply
 - 200-203-YEL
 - 200-203-BLK



SECTION 2: ANTI-KINK AIR COILS & ACCESSORIES

POLY-U HI-PERFORMANCE AIR COILS - THREE PACK: RED/BLU/BLK- SHORT TAILS - 1/4" FITTINGS

PART# 200-103-3-1/4

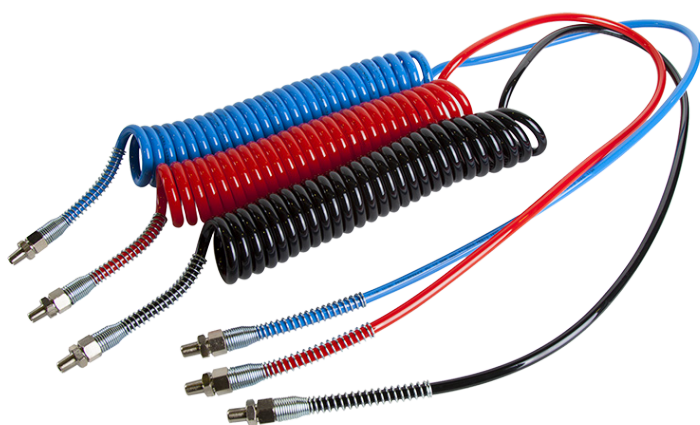


SPECIAL FEATURES

- Trimatic set of 3 anti-kink air coils - Red/Blue/Black
- With 1/4" ends for Trimatic/Duomatic couplers
- Tube size: 12mm OD x 7.6mm ID
- Temperature range: -40°C to 75°C
- Working length = 3.6m
- Available with 1/2" fittings on request

POLY-U HI-PERFORMANCE AIR COILS - THREE PACK: RED/BLU/BLK- LONG TAILS - 1/4" FITTINGS

PART# 200-203-3-1/4

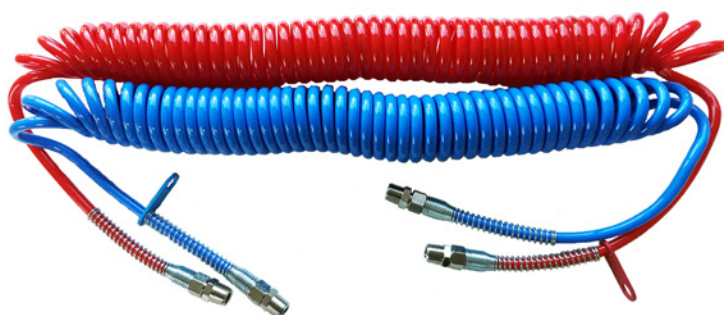


SPECIAL FEATURES

- Trimatic set of 3 anti-kink air coils - Red/Blue/Black
- With 1/4" ends for Trimatic/Duomatic couplers
- Tube size: 12mm OD x 7.6mm ID
- Temperature range: -40°C to 75°C
- 1m long tail for extended reach = 4.6m
- Available with 1/2" fittings on request

SHORT TAIL POLY-U HI-PERFORMANCE AIR COILS - PAIR - 2XSHORT TAILS - 1/2" BSPT (7M)

PART# 200-103-7M



SPECIAL FEATURES

- 7m working length – perfect for retractable skulls!
- Tube size: 12mm OD x 7.6mm ID
- Half inch BSPT fittings with metal spring guard
- Stainless steel compression fittings (olive + insert)
- Temperature range -40°C to 75°C
- Available with 1/4" BSPT fittings (Part # 200-103-7M-1/4")

SECTION 2: ANTI-KINK AIR COILS & ACCESSORIES

RED & BLUE HI-PERFORMANCE AIR COILS - PAIR - SHORT REACH

PART# 200-003



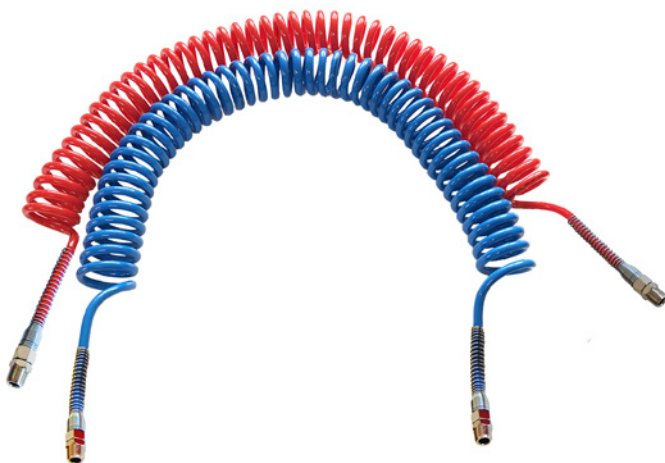
SPECIAL FEATURES

- Short reach for applications with reduced swing - ideal for underslung use behind 5th wheel
- Tube size: 12mm OD x 7.6mm ID
- Half inch BSPT fittings with spring guards
- Temperature range -40°C to 75°C
- Available with 1/4" BSPT fittings on request
- NOW also available in yellow for auxiliary air supply - 200-003-YEL



RED & BLUE HI-PERFORMANCE AIR COILS - PAIR - EXTRA LONG - WITH 1/2 INCH BSPT FITTINGS

PART# 200-303F/403F/503F



SPECIAL FEATURES

- Extra long coiled air tube with 2 x short tails
- For use on long reach applications, such as extendable skulls
- 1/2" BSPT fittings with metal spring guards
- Tube size: 12mm OD x 7.6mm ID
- Temperature range -40°C to 75°C
- 200-303F = 10.5M
- 200-403F = 11.5M
- 200-503F = 12.5M

POLY-U AIR TUBE STRAIGHT - 12MMOD X 76MMID - BLACK - PER METER

PART# 000-200-BLK/BLU/
RED/YEL



SPECIAL FEATURES

- Customisable lengths
- Tube size: 12mm OD x 7.6mm ID
- Can be cut to length with 1/2" or 1/4" BSPT fittings + spring guards
- Temperature range -40°C to 75°C
- OPTIONAL FITTINGS: 1/2" or 1/4" BSPT fittings with spring guards

SECTION 2: ANTI-KINK AIR COILS & ACCESSORIES

1/2" BSPT COMPLETE FITTING WITH SPRING GUARD

PART# 200-FTG-1/2



SPECIAL FEATURES

- High quality compression end fittings designed specifically to match Trail-Link Hi-Performance Poly-U air tube
- Complete fitting includes:
 - spring guard protector in stainless steel
 - Back nut in stainless steel
 - Olive and insert in brass
 - Front end 1/2" fitting
- Once tightened to seal on the tube, compression fittings must NEVER be loosened or separated

1/4" BSPT COMPLETE FITTING WITH SPRING GUARD

PART# 200-FTG-1/4



SPECIAL FEATURES

- High quality compression end fittings designed specifically to match Trail-Link Hi-Performance Poly-U air tube
- Complete fitting includes:
 - spring guard protector in stainless steel
 - Back nut in stainless steel
 - Olive and insert in brass
 - Front end 1/4" fitting
- Once tightened to seal on the tube, compression fittings must NEVER be loosened or separated

PU AIR COILS - 12MM OLIVE AND 7.6MM SLEEVE

PART# 200-OLV
PART# 200-SLV



SPECIAL FEATURES

- Olive for outer of POLY-U Hi-Performance Air Coils (12mm)
- Sleeve (aka insert) for inner of POLY-U Hi-Performance Coils (7.6mm)
- Brass

SECTION 2: ANTI-KINK AIR COILS & ACCESSORIES

AIR FITTING UNION - 1/2" FEMALE TO 1/2" FEMALE

PART# 200-1/2INCH-FF



SPECIAL FEATURES

- 1/2" female union joins 1/2" male thread standpipe with 1/2" male end fitting on TRAIL-LINK Poly-U coils
- For use where no tap is required

AIR FITTING UNION - 1/2" MALE TO 1/2" MALE

PART# 200-1/2INCH-MM



SPECIAL FEATURES

- 1/2" Male Thread to 1/2" Male Thread joiner
- Brass pneumatic fitting

12MM TO 12MM QUICK JOINER

PART# 200-12MM-QJR



SPECIAL FEATURES

- 12MM OD Quick Joiner
- Brass push-to-connect joiner
- Suits TRAIL-LINK Hi-Performance Poly-urethane Air Tube

SECTION 2: ANTI-KINK AIR COILS & ACCESSORIES

AIR TAP - BALL VALVE - T HANDLE - 1/2" BSP - FEMALE TO FEMALE - BLUE/RED/YELLOW

PART# 200-1/2" TAP-FF



SPECIAL FEATURES

- 1/2" female thread to 1/2" female thread
- Blue handle for service line
- Red handle for emergency line
- Yellow handle for emergency or service line
- Joins Trail-Link Hi-Performance air coils with truck air pipes with or without quick couplers
- Fits on 1/2" standpipe or 1/2" male adapter piece
- Compatible with Volvo air pipes

AIR TAP - BALL VALVE - T HANDLE - 1/2" BSP - MALE TO FEMALE - BLUE/RED/YELLOW

PART# 200-1/2" TAP-MF



SPECIAL FEATURES

- 1/2" male thread to 1/2" female thread
- T-ball valve sealing air tap
- Blue handle for service line
- Red handle for emergency line
- Yellow handle for emergency or service line
- Joins Trail-Link Hi-Performance air coils with truck air pipes with or without quick couplers
- Fits on 1/2" standpipe or 1/2" male adapter piece
- Compatible with Volvo air pipes

AUXILIARY AIR SERVICE - 12M - 8MM X 5MM - 1/4" BSPT (VARIOUS COLOURS)

PART# 200-AUX-BU/BK/GR/OR/RD/YL



SPECIAL FEATURES

- 12m working length
- Tube size: 8mm OD x 5mm ID
- Quarter inch BSPT fittings with stainless steel spring guard
- Temperature range -40°C to 75°C
- Available in 6 distinct colour ways (Black, Blue, Orange, Red, Yellow and Green)

SECTION 2: ANTI-KINK AIR COILS & ACCESSORIES

STANDPIPE ADAPTOR - M18X15 TO 1/2" BSP MALE

PART# 200-M18-1/2INCH-M



SPECIAL FEATURES

- M18 female thread with sealing O-ring in swivel nut to 1/2" male BSPT thread
- Adapts M18 male thread standpipe to 1/2" Air taps (see 200-1/2" TAP-FF)
- Compatible with Mercedes-Benz

STANDPIPE ADAPTOR - M20X15 TO 1/2" BSP MALE

PART# 200-M20-1/2INCH-M



SPECIAL FEATURES

- M20 female thread with sealing O-ring in swivel nut to fit 1/2" male BSPT thread
- Adapts M20 male thread standpipe to fit 1/2" Air taps (see 200-1/2" TAP-FF)
- Compatible with UD

ADAPTOR: BULKHEAD - 3/8" - SEALING / NON-SEALING

PART# 200-CA93-109 (S OR NS)



SPECIAL FEATURES

- Bulkhead Adaptor
 - 3/8" male thread
 - Sealing = 200-CA93-109-S
- OR**
- Non-Sealing = 200-CA93-109-NS

SECTION 2: ANTI-KINK AIR COILS & ACCESSORIES

COUPLING: BULKHEAD- 3/8" - SEALING / NON-SEALING

PART# 200-CA93-117/112



SPECIAL FEATURES

- Bulkhead Coupling
 - 3/8" male thread
 - Sealing = 200-CA93-117S
- OR**
- Non-Sealing = 200-CA93-112

ADAPTOR: MALE - SEALING - 3/8" NPT THREAD

PART# 200-CA93-92



SPECIAL FEATURES

- Adaptor
- 1/2" male thread
- Sealing

ADAPTOR - MALE - 1/2" NPT THREAD - SEALING / NON-SEALING

PART# 200-CA93-93/20



SPECIAL FEATURES

- Adaptor
 - 1/2" male thread
 - Sealing = 200-CA93-93
- OR**
- Non-Sealing = 200-CA93-20

SECTION 2: ANTI-KINK AIR COILS & ACCESSORIES

ADAPTOR: FEMALE - 1/2" NPSF THREAD - SEALING / NON-SEALING

PART# 200-CA93-90/23



SPECIAL FEATURES

- Adaptor
 - 1/2" female thread
 - Sealing = 200-CA93-90
- OR**
- Non-Sealing = 200-CA93-23

COUPLING: MALE - 1/2" NPT THREAD - SEALING / NON-SEALING

PART# 200-CA93-32/85



SPECIAL FEATURES

- Coupling
 - 1/2" male thread
 - Sealing = 200-CA93-32
- OR**
- Non-Sealing = 200-CA93-85

COUPLING: FEMALE - 1/2" NPSF THREAD - SEALING / NON-SEALING

PART# 200-CA93-35/87



SPECIAL FEATURES

- Coupling
 - 1/2" female thread
 - Sealing = 200-CA93-35
- OR**
- Non-Sealing = 200-CA93-87

SECTION 3: EBS COILS

EBS COILS

TRAIL-LINK's Electronic Braking System (EBS) Coils are produced from high quality polyurethane, selected for its unbeatable wear-and-tear resistance. Our coils are weather, oil, grease, abrasion & UV resistant and offer excellent recoil memory.

ABS/EBS braking systems are increasingly common and are required by law on all new trailers. TRAIL-LINK coils come complete with the standard ABS/EBS plug & catch combination, providing constant power from prime mover to trailer ensuring safer breaking and peace of mind.

TRAIL-LINK coils are available with 12 volt, 24 volt or multi-volt plugs, as well as customisable combinations of these.

IS IT THE RESPONSIBILITY OF THE USER TO ENSURE THAT THE PLUG AND SOCKET ARE CONNECTED IN CORRECT LATCH ALIGNMENT, AND ARE COMPATIBLE TO THE VOLTAGE OF THE TOWING AND TOWED VEHICLE.



SECTION 3: EBS COILS

7 PIN EBS BRAKING COIL - 2 X MULTI VOLT PLUGS - SHORT TAILS (3.6M)

PART# 100-913



SPECIAL FEATURES

- Polyurethane coil
- 2 x 7Pin EBS plugs (multivolt)
- Wire sizes: 5 x 1.5mm² + 2 x 4mm²
- Includes 2 x CAN data lines (twisted pair)
- For use on 12 Volt or 24 Volt applications
- Suitable for ABS and EBS use

WARNING: Only to be used with multivolt EBS/ABS systems. It is the responsibility of the user to ensure correct voltage compatibility and latch alignment.

7 PIN EBS BRAKING COIL - 2X12 VOLT PLUGS (ISO7638-2) - SHORT TAILS (3.6M)

PART# 100-903V12



SPECIAL FEATURES

- Polyurethane coil
- 2 x 7Pin EBS plugs (12volt)
- Wire sizes: 5 x 1.5mm² + 2 x 6mm²
- Includes 2 x CAN data lines (twisted pair)
- For use on 12 Volt applications
- Suitable for ABS and EBS use

7 PIN EBS BRAKING COIL - 2X24 VOLT PLUGS (ISO7638-1) - SHORT TAILS (3.6M)

PART# 100-903



SPECIAL FEATURES

- Polyurethane coil
- 2 x 7Pin EBS plugs (24volt)
- Wire sizes: 5 x 1.5mm² + 2 x 4mm²
- Includes 2 x CAN data lines (twisted pair)
- For use on 24 Volt applications
- Suitable for ABS and EBS use

SECTION 3: EBS COILS

7PIN EBS BRAKING COIL - 2 X MOULDED MULTI VOLT PLUGS - SHORT TAILS (3.6M)

PART# 100-913-MLD



SPECIAL FEATURES

- MOULDED Plugs to eliminate water ingress!
- Polyurethane coil
- 2 x moulded 7Pin EBS multivolt plugs
- Wire sizes: 5 x 1.5mm² + 2 x 4mm²
- Includes 2 x CAN Data lines (twisted pair)
- Working length = 3.6m
- Perfect choice for high-wash or wet conditions, or where experiencing water ingress issues

WARNING: Only to be used with multivolt EBS/ABS systems. It is the responsibility of the user to ensure correct voltage compatibility and latch alignment.

7PIN EBS BRAKING COIL - 2 X MOULDED 12VOLT PLUGS - SHORT TAILS (3.6M)

PART# 100-903V12-MLD



SPECIAL FEATURES

- MOULDED Plugs to eliminate water ingress!
- Polyurethane coil
- 2 x moulded 7Pin 12Volt plugs
- Wire sizes: 5 x 1.5mm² + 2 x 4mm²
- Includes 2 x CAN Data lines (twisted pair)
- Working length = 3.6m
- Perfect choice for high-wash or wet conditions, or where experiencing water ingress issues

7PIN EBS BRAKING COIL - 2 X MOULDED 24VOLT PLUGS - SHORT TAILS (3.6M)

PART# 100-903-MLD



SPECIAL FEATURES

- Polyurethane coil
- 2 x 7Pin EBS plugs (24volt)
- Wire sizes: 5 x 1.5mm² + 2 x 4mm²
- Includes 2 x CAN data lines (twisted pair)
- For use on 24 Volt applications
- Suitable for ABS and EBS use

SECTION 3: EBS COILS

7 PIN EBS BRAKING COIL - 2 X MULTI VOLT PLUGS - 1M LONG TAIL (4.6M)

PART# 100-913LT



SPECIAL FEATURES

- Polyurethane coil
- 2 x 7Pin EBS plugs (multivolt)
- Wire sizes: 5 x 1.5mm² + 2 x 4mm²
- Includes 2 x CAN data lines (twisted pair)
- 1m long tail for extended reach
- For use on 12 Volt or 24 Volt applications
- Suitable for ABS and EBS use

WARNING: Only to be used with multivolt EBS/ABS systems. It is the responsibility of the user to ensure correct voltage compatibility and latch alignment.

7 PIN EBS BRAKING COIL - 2X12 VOLT PLUGS (ISO7638-2) - 1M LONG TAIL (4.6M)

PART# 100-903V12LT



SPECIAL FEATURES

- Polyurethane coil
- 2 x 7Pin EBS plugs (12volt)
- Wire sizes: 5 x 1.5mm² + 2 x 6mm²
- Includes 2 x CAN data lines (twisted pair)
- 1m long tail for extended reach
- For use on 12 Volt applications
- Suitable for ABS and EBS use

7 PIN EBS BRAKING COIL - 2X24 VOLT PLUGS (ISO7638-1) - 1M LONG TAIL (4.6M)

PART# 100-903LT



SPECIAL FEATURES

- Polyurethane coil
- 2 x 7Pin EBS plugs (24volt)
- Wire sizes: 5 x 1.5mm² + 2 x 4mm²
- Includes 2 x CAN data lines (twisted pair)
- 1m long tail for extended reach
- For use on 24 Volt applications
- Suitable for ABS and EBS use

SECTION 3: EBS COILS

7PIN EBS BRAKING COIL - 2 X MOULDED MULTI VOLT PLUGS - 1M LONGTAIL (4.6M)

PART# 100-913LT-MLD



SPECIAL FEATURES

- MOULDED Plugs to eliminate water ingress!
- Polyurethane coil
- 2 x moulded 7Pin multivolt plugs
- Wire sizes: 5 x 1.5mm² + 2 x 4mm²
- Includes 2 x CAN Data lines (twisted pair)
- 1m long tail for extended reach = 4.6m
- Perfect choice for high-wash or wet conditions, or where experiencing water ingress issues

WARNING: Only to be used with multivolt EBS/ABS systems. It is the responsibility of the user to ensure correct voltage compatibility and latch alignment.

7PIN EBS BRAKING COIL - 2 X MOULDED 12VOLT PLUGS - LONG TAIL (4.6M)

PART# 100-903V12LT-MLD



SPECIAL FEATURES

- MOULDED Plugs to eliminate water ingress!
- Polyurethane coil
- 2 x moulded 7Pin 12V plugs
- Wire sizes: 5 x 1.5mm² + 2 x 4mm²
- Includes 2 x CAN Data lines (twisted pair)
- 1m long tail for extended reach = 4.6m
- Perfect choice for high-wash or wet conditions, or where experiencing water ingress issues

7PIN EBS BRAKING COIL - 2 X MOULDED 24VOLT PLUGS - LONG TAIL (4.6M)

PART# 100-903LT-MLD



SPECIAL FEATURES

- MOULDED Plugs to eliminate water ingress!
- Polyurethane coil
- 2 x moulded 7Pin 24V plugs
- Wire sizes: 5 x 1.5mm² + 2 x 4mm²
- Includes 2 x CAN Data lines (twisted pair)
- 1m long tail for extended reach = 4.6m
- Perfect choice for high-wash or wet conditions, or where experiencing water ingress issues

SECTION 4: BATTERY CHARGING PRODUCTS

BATTERY CHARGING PRODUCTS

Trail-Link's range of battery charging productions are designed for safe and reliable connections between vehicles.

The range includes high AMP (200AMP) for tailgate-lift systems and similar uses, down to lower AMP (50-80AMP) coils for trickle charging. We supply a range of connectors, including Anderson, 2 Pole and bare ended solutions.

LONG TAIL POLY-U BATTERY CHARGING COIL (BARE ENDS)

PART# 100-124-21MM



SPECIAL FEATURES

- Poly-U Battery Charging Coil
- Wire sizes: 2 x 21mm²
- Red = positive; Black = negative
- AMP rating = 200A Intermittent / 110A Continuous
- 1m long tail for extended reach
- 5.2m working length

LONG TAIL POLY-U BATTERY CHARGING COIL WITH ANDERSON CONNECTORS

PART# 100-A224-21MM



SPECIAL FEATURES

- Poly-U Battery Charging Coil
- 2 x Genuine Anderson Plugs fitted (Grey 175AMP)
- Protected with heat shrink rubber boots
- Wire sizes: 2 x 21mm²
- Red = positive; Black = negative
- AMP rating = 200A Intermittent / 110A Continuous
- 1m long tail for extended reach
- 5.2m working length

SECTION 4: BATTERY CHARGING PRODUCTS

LONG TAIL BONDED BATTERY CHARGING COIL (BARE ENDS)

PART# 100-124



SPECIAL FEATURES

- Bonded Battery Charging Coil
- Wire sizes: 2 x 21mm²
- Red = positive; Red/Black = negative
- AMP rating = 200A Intermittent / 110A Continuous
- 1m long tail for extended reach
- 5.2m working length

LONG TAIL BONDED BATTERY CHARGING COIL WITH ANDERSON CONNECTORS

PART# 100-224-AND



SPECIAL FEATURES

- Bonded Battery Charging Coil
- 2 x Genuine Anderson Plugs fitted (Grey 175AMP)
- Protected with heat shrink rubber boots
- Wire sizes: 2 x 21mm²
- Red = positive; Red/Black = negative
- AMP rating = 200A Intermittent / 110A Continuous
- 1m long tail for extended reach
- 5.2m working length

LONG TAIL BONDED BATTERY CHARGING COIL WITH 2 POLE PLUGS

PART# 100-224



SPECIAL FEATURES

- Bonded Battery Charging Coil
- 2 x 2 Pole Plugs Fitted
- Protected with heat shrink rubber boots
- Wire sizes: 2 x 21mm²
- Red = positive; Red/Black = negative
- AMP rating = 200A Intermittent / 110A Continuous
- 1m long tail for extended reach
- 5.2m working length

SECTION 4: BATTERY CHARGING PRODUCTS

SHORT TAIL POLY-U BATTERY CHARGING COIL (BARE ENDS)

PART# 100-123-21MM



SPECIAL FEATURES

- Poly-U Battery Charging Coil
- Wire sizes: 2 x 21mm²
- Red = positive; Black = negative
- AMP rating = 200A Intermittent / 110A Continuous
- 3.6m working length

SHORT TAIL POLY-U BATTERY CHARGING COIL WITH ANDERSON CONNECTORS

PART# 100-A223-21MM



SPECIAL FEATURES

- Poly-U Battery Charging Coil
- 2 x Genuine Anderson Plugs fitted (Grey 175AMP)
- Protected with heat shrink rubber boots
- Wire sizes: 2 x 21mm²
- Red = positive; Black = negative
- AMP rating = 200A Intermittent / 110A Continuous
- 3.6m working length

SECTION 4: BATTERY CHARGING PRODUCTS

SHORT TAIL BONDED BATTERY CHARGING COIL (BARE ENDS)

PART# 100-123



SPECIAL FEATURES

- Bonded Battery Charging Coil
- Wire sizes: 2 x 21mm²
- Red = positive; Red/Black = negative
- AMP rating = 200A Intermittent / 110A Continuous
- 3.6m working length

SHORT TAIL BONDED BATTERY CHARGING COIL WITH ANDERSON CONNECTORS

PART# 100-223-AND



SPECIAL FEATURES

- Bonded Battery Charging Coil
- 2 x Genuine Anderson Plugs fitted (Grey 175AMP)
- Protected with heat shrink rubber boots
- Wire sizes: 2 x 21mm²
- Red = positive; Red/Black = negative
- AMP rating = 200A Intermittent / 110A Continuous
- 3.6m working length

SHORT TAIL BONDED BATTERY CHARGING COIL WITH 2 POLE PLUGS

PART# 100-223



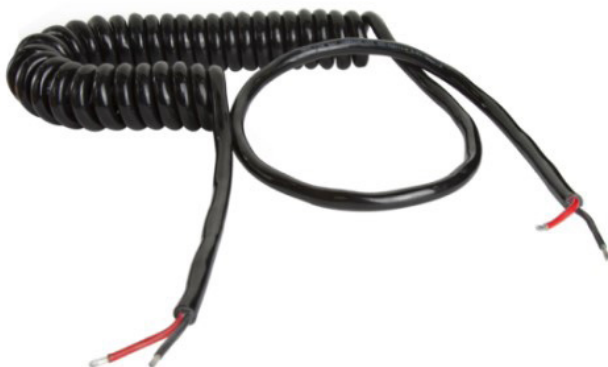
SPECIAL FEATURES

- Bonded Battery Charging Coil
- 2 x 2 Pole Plugs Fitted
- Protected with heat shrink rubber boots
- Wire sizes: 2 x 21mm²
- Red = positive; Red/Black = negative
- AMP rating = 200A Intermittent / 110A Continuous
- 3.6m working length

SECTION 4: BATTERY CHARGING PRODUCTS

2 CORE 8MM POLY-U BATTERY CHARGING COIL (BARE ENDS)

PART# 100-124-8MM



SPECIAL FEATURES

- 2core POLY-U battery charging coil
- Wire sizes: 2 x 8mm²
- Red = positive; Black = negative
- AMP rating = 80-100A
- 1m long tail for extended reach
- 4.6m working length

2 CORE 8MM POLY-U BATTERY CHARGING COIL WITH ANDERSON CONNECTORS

PART# 100-A224-8MM



SPECIAL FEATURES

- 2core POLY-U battery charging coil
- 2 x Genuine Anderson Plugs fitted (Grey 175AMP)
- Protected with heat shrink rubber boots
- Wire sizes: 2 x 8mm²
- Red = positive; Black = negative
- AMP rating = 80-100A
- 1m long tail for extended reach
- 4.6m working length

MINI 2 CORE 8MM POLY-U BATTERY CHARGING COIL (BARE ENDS)

PART# 100-124-8MM-MINI



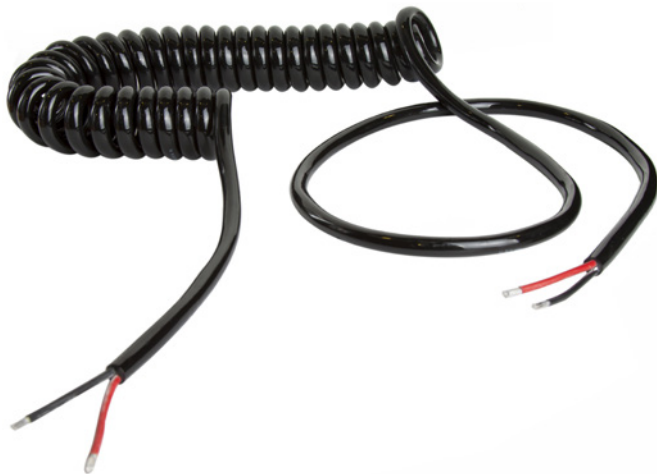
SPECIAL FEATURES

- 2core POLY-U battery charging coil
- Wire sizes: 2 x 8mm²
- Red = positive; Black = negative
- AMP rating = 50-80A
- 2m working length

SECTION 4: BATTERY CHARGING PRODUCTS

2 CORE 6MM POLY-U BATTERY CHARGING COIL (BARE ENDS)

PART# 100-124-6MM



SPECIAL FEATURES

- 2core POLY-U battery charging coil
- Wire sizes: 2 x =6mm²
- Red = positive; Black = negative
- AMP rating = 50-80A
- 1m long tail for extended reach
- 4.6m working length

2 CORE 6MM POLY-U BATTERY CHARGING COIL WITH ANDERSON CONNECTORS

PART# 100-A224-6MM



SPECIAL FEATURES

- 2core POLY-U battery charging coil
- 2 x Genuine Anderson Plugs fitted (Grey 175AMP)
- Protected with heat shrink rubber boots
- Wire sizes: 2 x =6mm²
- Red = positive; Black = negative
- AMP rating = 50-80A
- 1m long tail for extended reach
- 4.6m working length

MINI 2 CORE 6MM POLY-U BATTERY CHARGING COIL (BARE ENDS)

PART# 100-124-6MM-MINI



SPECIAL FEATURES

- 2core POLY-U battery charging coil
- Wire sizes: 2 x =6mm²
- Red = positive; Black = negative
- AMP rating = 50-80A
- 2m working length

SECTION 5: PLUGS

PLUGS

Trail-Link's U-Connect plugs allow users to fit new plugs or replace damaged plugs on their existing cables.

Plugs are supplied with screw-type contacts and wiring guidelines to ensure standard wiring and hassle-free connecting.

7PIN DIN/ROUND TRAILER PLUG (NON-CONDUCTIVE) - PLASTIC
7PIN DIN/ROUND TRAILER PLUG - METAL

PART# 500-102
PART# 500-102M



SPECIAL FEATURES

- Standard 7Pin DIN plug
- High quality, non-conductive plastic body
- Mates with 600-102/600-104

SPECIAL FEATURES

- Standard 7Pin DIN plug
- Heavy duty metal body
- Mates with 600-102/600-104

7PIN SAE / HEAVY DUTY PLUG - PLASTIC
7PIN SAE / HEAVY DUTY PLUG - METAL

PART# 500-302
PART# 500-302M



SPECIAL FEATURES

- 7Pin SAE/EURO plug
- High quality, non-conductive plastic body
- Supplied with protective spring guard
- Mates with 600-502/600-502M

SPECIAL FEATURES

- 7Pin SAE/EURO plug
- Heavy duty metal body
- Mates with 600-502M/600-502

SECTION 5: PLUGS

SUPPLEMENTARY SAE (ISO3731) - WHITE PLUG - INVERTED PIN - PLASTIC
SUPPLEMENTARY SAE (ISO3731) - WHITE PLUG - INVERTED PIN - METAL

PART# 500-302SP
PART# 500-302SPM



SPECIAL FEATURES

- Supplementary 7Pin plug with inverted earth
- ISO 3731 for auxiliary applications
- High quality, non-conductive plastic body
- Mates with 600-502SP/600-502SPM

SPECIAL FEATURES

- Supplementary 7Pin plug with inverted earth
- ISO 3731 for auxiliary applications
- Heavy duty metal body
- Mates with 600-502SPM/600-502SP

7PIN EBS PLUG MULTIVOLT (12/24V) - SCREW TYPE

PART# 500-412



SPECIAL FEATURES

- 7Pin plug for EBS braking systems
- For use on combination 12 Volt, 24 Volt, or multi-volt applications
- Supplied with screw type contacts. Crimp type available on request
- Mates with 600-302/600-302V12

WARNING: Only to be used on multivolt EBS/ABS systems. It is the responsibility of the user to ensure correct voltage compatibility and latch alignment.

7 PIN EBS PLUG 24 VOLT PLUG (ISO7638-1) - SCREW TYPE

PART# 500-402



SPECIAL FEATURES

- 7Pin plug for EBS braking systems
- For use on 24 Volt applications
- Supplied with screw type contacts. Crimp type available on request
- Mates with 600-302

SECTION 5: PLUGS

7 PIN EBS PLUG 12VOLT (ISO 7638-2) - SCREW TYPE

PART# 500-402V12



SPECIAL FEATURES

- 7Pin plug for EBS braking systems
- For use on 12 Volt applications
- Supplied with screw type contacts. Crimp type available on request
- Mates with 600-302V12

GENUINE ANDERSON PLUG/SOCKET 175 AMP. WITH 4AWG /21MM² CONNECTORS

PART# 500-A175-GRY



SPECIAL FEATURES

- Genuine Anderson Plugs
- Grey
- 175 AMP – 600 V rating
- 4 AWG
- Red = positive; Black = negative
- For use on 21mm² coils
- Supplied with 2 x 4 AWG lugs

MOULDED HEAT SHRINK FOR ANDERSON 175A PLUG

PART# 500-A175-MHS



SPECIAL FEATURES

- *NEW PRODUCT*
- Black Heat Shrink Protective Boot
- Purpose made for Anderson Plugs
- Includes rear break-out for 2 core cables
- Safe and secure protector for battery charging applications

SECTION 5: PLUGS

ANDERSON SAFETY PROTECTION BOOT - LOAD
ANDERSON SAFETY PROTECTION BOOT - SOURCE

PART# 500-A175-BL
PART# 500-A175-BS



SPECIAL FEATURES

- Genuine Anderson Protective Boot for Plugs
- Rubber
- Fits 175 AMP-600 V plugs
- For use on 21mm² coils
- LEFT image fits the LOAD side
- RIGHT image fits the SOURCE side

2 POLE METAL PLUG - 200AMP - SCREW TYPE

PART# 500-903



SPECIAL FEATURES

- Alternative to Anderson connectors for transport vehicles
- 1 x positive; 1 x negative pole
- Heavy duty metal body with spring guard
- Nominal AMP rating = 200Amp
- Supplied with screw type fittings. Crimp type available on request

13PIN PLUG (ISO11446) - SCREW TYPE

PART# 500-602



SPECIAL FEATURES

- 13Pin European 12V standard plug
- Non-conductive plastic body
- Twist/Lock connection
- Mates with 600-602

SECTION 5: PLUGS

13PIN PLUG WEST PLUG - SCREW TYPE (ISO 11446)

PART# 500-113-WEST



SPECIAL FEATURES

- Genuine 13 Pin WeSt plug
- ISO 11446
- 7 Pin round plug + 6 ADDITIONAL PINS
- 12v Nominal power supply
- Screw type
- Perfect for caravan use to increase functionalities
- High quality, non-conductive plastic body
- Mates with 600-113-WEST

12 PIN MIL SPEC / NATO PLUG WITH MALE PINS

PART# 500-12P



SPECIAL FEATURES

- Available on request
- Also available with female tubes (PART# 500-12T)
- Mates with 600-12P

15 PIN PLUG (ISO12098) 24 VOLT- SCREW TYPE

PART# 500-202



SPECIAL FEATURES

- 15Pin plug for latest generation European vehicles
- Supplied with screw type contacts. Crimp type available on request
- Mates with 600-202

SECTION 6: SOCKETS

SOCKETS

Trail-Link's U-Connect sockets are perfect for OE manufacturers, or for users replace damaged sockets on their vehicles.

Sockets are supplied with screw-type contacts and wiring guidelines and instructions to ensure standard wiring and hassle-free connecting.

7PIN ROUND DIN SOCKET (NON CONDUCTIVE) - PLASTIC
7PIN ROUND DIN SOCKET - METAL

PART# 600-102
PART# 600-104



SPECIAL FEATURES

- Standard 7Pin DIN socket
- High quality, non-conductive plastic body
- Mates with 500-102/500-102M

SPECIAL FEATURES

- Standard 7Pin DIN socket
- Heavy duty metal body
- Mates with 500-102M/500-102

RUBBER BOOT - ISO1724/ISO11446

PART# 600-1RB



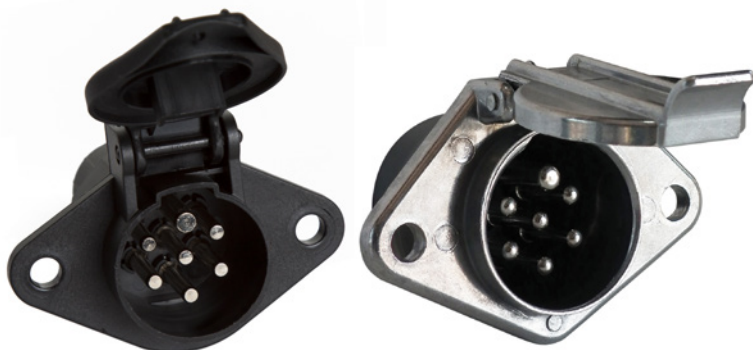
SPECIAL FEATURES

- Rubber boot to prevent water and dust ingress into back of socket
- Keep wiring safe from deterioration and rusting
- Fits behind any DIN socket
- Customisable to your cable size. Simply cut tiers of rubber to fit over your cable diameter
- For use with 600-102/600-104

SECTION 6: SOCKETS

7PIN HEAVY DUTY/SAE SOCKET (ISO1185) - PLASTIC
7PIN HEAVY DUTY/SAE SOCKET (ISO1185) - METAL

PART# 600-502
PART# 600-502M



SPECIAL FEATURES

- 7Pin SAE/EURO socket
- High quality, non-conductive plastic body
- Mates with 500-302/500-302M

SPECIAL FEATURES

- 7Pin SAE/EURO socket
- Heavy duty metal body
- Mates with 500-302M/500-302

7PIN EURO SOCKET - AS4735

PART# 600-502-AS

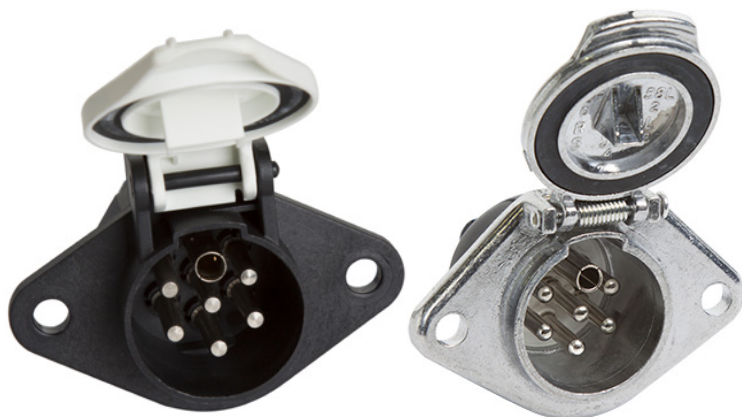


SPECIAL FEATURES

- 7Pin AS 4735 socket
- High quality, non-conductive plastic body
- Mates with 500-302/500-302M
- Socket to alert users that vehicle wiring is new ADR standard AS 4735
- Mates with 500-302/500-302M

SAE 7PIN SUPPLEMENTARY SOCKET - PLASTIC (ISO3731)
SAE 7PIN SUPPLEMENTARY SOCKET - METAL (ISO3731)

PART# 600-502SP
PART# 600-502SPM



SPECIAL FEATURES

- Supplementary 7Pin socket with inverted earth
- ISO 3731 for auxiliary applications
- High quality, non-conductive plastic body
- With distinctive white lid to easily differentiate
- Mates with 500-302SP/500-302SPM

SPECIAL FEATURES

- Supplementary 7Pin socket with inverted earth
- ISO 3731 for auxiliary applications
- Heavy duty metal body
- Mates with 500-302SPM/500-302SP

SECTION 6: SOCKETS

7PIN HEAVY DUTY/SAE PARKING SOCKET (ISO1885) - PLASTIC

PART# 600-501



SPECIAL FEATURES

- 7Pin SAE/EURO park / dummy socket
- Identifiable blue lid
- High quality, non-conductive plastic body
- No pins - dummy socket
- Safely stores and protects coils when not in use

7 PIN EBS SOCKET (24V) (ISO7638-1) - SCREW TYPE

PART# 600-302



SPECIAL FEATURES

- 7Pin socket for EBS braking systems
- For use on 24 Volt applications
- Can also be used on 5Pin applications
- Supplied with screw type contacts. Crimp type available on request
- Mates with 500-402/500-412

7 PIN EBS SOCKET (12V) (ISO 7638-2) - SCREW TYPE

PART# 600-302V12



SPECIAL FEATURES

- 7Pin socket for EBS braking systems
- For use on 12 Volt applications
- Can also be used on 5Pin applications
- Supplied with screw type contacts. Crimp type available on request
- Mates with 500-402V12/500-412

SECTION 6: SOCKETS

EBS PARK SOCKET - MULTIVOLT

PART# 600-301



SPECIAL FEATURES

- 7Pin universal parking socket (no connectors)
- Essential to waterproof cables
- For safe storage of EBS cables when not plugged into trailer
- For use on 24volt or 12volt applications
- Can also be used on 5Pin ABS or 15Pin power cables
- Mates with 500-402/500-402V12/500-412/500-202

2 POLE SOCKET - 200AMP

PART# 600-903



SPECIAL FEATURES

- Safe alternative to Anderson connectors for transport vehicles
- 1 x positive; 1 x negative pole
- Heavy duty metal body with positive latch
- Nominal AMP rating = 200A Max
- Supplied with screw type fittings. Crimp type available on request

13PIN SOCKET (ISO 11446) - SCREW TYPE CONTACTS

PART# 600-602



SPECIAL FEATURES

- 13Pin European 12V socket
- Non-conductive plastic body
- Twist/Lock connection
- Mates with 500-602

SECTION 6: SOCKETS

13PIN EURO TO 7 PIN DIN CONVERTOR SOCKET

PART# 600-802



SPECIAL FEATURES

- Adapts fro 13Pin Euro style female socket to 7Pin DIN socket
- Non-conductive plastic body
- Twist/lock connection
- Supplied with correct fasteners
- Compatible with VW, Mercedes, IVECO, Jeep etc.

13PIN EURO TO 7 PIN DIN CONVERTOR SOCKET WITH 400MM CABLE

PART# 600-802-400MM



SPECIAL FEATURES

- Adapts fro 13Pin Euro style female socket to 7Pin flying DIN socket
- 400MM straight cable for more length
- Non-conductive plastic body
- Compatible with VW, Mercedes, IVECO, Jeep etc.

13PIN WEST SOCKET - SCREW TYPE CONTACTS - WITHOUT MICROSWITCH (ISO 11446)

PART# 600-113-WEST



SPECIAL FEATURES

- Genuine 13 Pin WeSt socket
- ISO 11446
- 7 Pin round socket + 6 ADDITIONAL PINS
- 12v Nominal power supply
- Screw type
- Perfect for caravan use to increase functionalities
- High quality, non-conductive plastic body
- Mates with 500-113-WEST

SECTION 6: SOCKETS

12 PIN MIL SPEC / NATO SOCKET WITH FEMALE TUBES

PART# 600-12T



SPECIAL FEATURES

- Available on request
- Also available with female tubes (PART# 600-12P)
- Mates with 500-12T

15 PIN SOCKET 24V (12098) - SCREW TYPE

PART# 600-202



SPECIAL FEATURES

- 15Pin socket for latest generation European vehicles and SMART-Trailers
- Available with screw type contacts. Crimp type available on request

SECTION 7: ACCESSORIES

ACCESSORIES

Trail-Link's accessories have been carefully selected to add safety, convenience and value to towing & towed vehicles, both on the road and off.

TRAIL-LINK DIN SOCKET MOUNT - PLUG RETAINER

PART# 700-102



SPECIAL FEATURES

- Stainless steel spring catch
- Provides lock-in of 7Pin DIN connectors
- Easy installation
- Fits behind existing socket (no need to disconnect wires)
- Registered Design

SUZI HANGER SPRING WITH LOOP

PART# 900-102



SPECIAL FEATURES

- Assists on low mounting locations
- Supports coils to stay clear of chassis and propshaft
- Accommodates air, electrical and EBS coils
- Easy to install

SECTION 7: ACCESSORIES

COIL SUSPENSION KIT - POLY FABRIC SHEATH WITH 4 HOLE CLAMP - 13" OR 20"

PART# 900-108-13"
PART# 900-108-20"
PART# 900-108-13"-DC



SPECIAL FEATURES

- Suzi coil suspension spring kit
- Spring sheathed in poly-fabric
- Comes with Carabiner clip and basic 4 hole clamp (screw type)
- Used with 900-106 CAB MOUNT SLIDER BAR range

AVAILABLE in:

- 13" / 330mm coil length or
- 20" / 510mm coil length

OR

- DOUBLE KIT: 2 x 13" / 330mm coil lengths

4 HOLE CABLE CLAMP WITH BLACK CARABINER

PART# 900-104



SPECIAL FEATURES

- 4 Hole Clamp
- Supports coils to stay clear of chassis and propshaft
- Accommodates up to 4 cables (e.g. Red air, Blue air, Electrical & EBS)
- Heavy duty clip-clamp closure
- No screws, no install
- Carabiner clip for simple and swift use
- For safe and easy suspension of coils on pogo stick or spring behind cab

3-HOLE HOSE CLAMP WITH CARABINER CLIP - 360 ROTATION

PART# 900-103



SPECIAL FEATURES

- 360 degree swivel for maximum articulation
- Supports coils to stay clear of chassis and propshaft
- Accommodates up to 3 cables (e.g. Red air, Blue air, Electrical)
- Heavy duty clip-clamp closure
- No screws, no install
- Carabiner clip for simple and swift use
- For safe and easy suspension of coils on pogo stick or spring behind cab

SECTION 7: ACCESSORIES

POGO STICK CHROME PLATED - 1016MM/40"

PART# 900-107



SPECIAL FEATURES

- Chrome plated Pogo Stick
- 40" / 1016mm
- 4 optional adjustment heights for flexibility
- Comes with carabiner clip

CAB MOUNT SLIDER BAR- STAINLESS STEEL

PART# 900-106-20
PART# 900-106-31.5
PART# 900-106-37.5
PART# 900-106-43

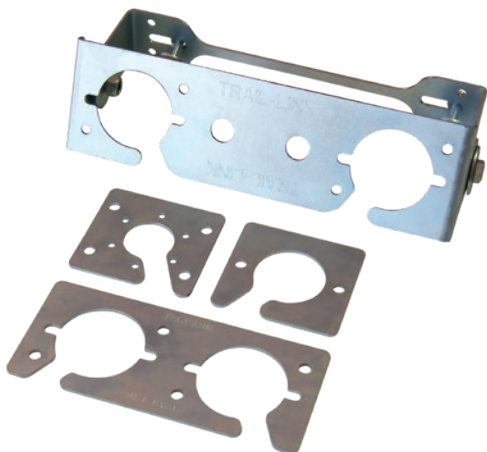


SPECIAL FEATURES

- Slider bar with pre-drilled adjustable holes
- Conveniently mounts to back of Truck Cab
- Stainless steel weather-resistant material
- Alternative to pogo stick
- Used with 900-102 or 900-108 coil suspension springs:
 - 20" / 510mm
 - 31.5" / 800mm
 - 37.5" / 950mm
 - 43" / 1100mm

TRAIL-LINK UNDERSLUNG BRACKET ASSEMBLY (INCLUDES ADAPTOR AND EXTENSION PLATES)

PART# USK-ASS



SPECIAL FEATURES

- 2 part assembly for easy installation
- Adjustable angle to protect suzi coils and hoses
- Modular system with **add-on** and **adapter** plates
- Allows for extra connectors and custom configurations
- Registered Design

SECTION 7: ACCESSORIES

HI-VIS KING PIN LOCK - POWDER COATED ORANGE WITH VISIBILITY TAG - KEYED ALIKE
HI-VIS KING PIN LOCK - POWDER COATED ORANGE WITH VISIBILITY TAG - KEYED DIFFERENTLY

PART# KPN-LOC-KA
PART# KPN-LOC-KD



SPECIAL FEATURES

- High visibility King Pin Lock
 - Theft deterrent
 - Prevents unauthorised hooking up of trailers
 - Powder coated in safety orange
 - Secured orange safety tag for easy identification
 - Keyed with alike locks for fleet/driver convenience
- OR**
- Keyed differently for added safety

7PIN DIN PLUG TO 7PIN SAE SOCKET ADAPTER

PART# DIN2SAE



SPECIAL FEATURES

- Short adapter to switch an Australian socket to a European socket

[Adapts from DIN PLUG to SAE SOCKET](#)

FOR WIRING DIAGRAM, PLEASE SEE **TABLE D** ON PAGE 6

7PIN SAE PLUG TO 7PIN DIN SOCKET ADAPTER

PART# SAE2DIN



SPECIAL FEATURES

- Short adapter to switch a European socket to an Australian socket

[Adapts from SAE PLUG to DIN SOCKET](#)

FOR WIRING DIAGRAM, PLEASE SEE **TABLE D** ON PAGE 6

SECTION 7: ACCESSORIES

7 PIN DIN OUTPUT TESTER - SHORT LEAD

PART# INS-SOC



SPECIAL FEATURES

- Tests 7Pin DIN output on any towing vehicle to isolate faults
- Tester wired to Australian standard
- LED lights in test unit to indicate correct functions

7 PIN DIN OUTPUT TESTER - LONG LEAD

PART# INS-TES



SPECIAL FEATURES

- Tests 7Pin DIN output on any towing vehicle to isolate faults
- Tester wired to Australian standard
- 10m length allows for one person testing
- LED lights in test unit to indicate correct functions

MULTIVOLT EBS FUNCTION TESTER

PART# EBS-TEST



SPECIAL FEATURES

- Multi-volt EBS diagnostic tester
- Australia customised to test 12v and/or 24v sockets and plugs
- 6 LED display indicate green for "OK" or red for "DEFECTIVE"
- Includes CAN-Bus power measure high or low

SECTION 7: ACCESSORIES

MULTIVOLT AC TO DC CONVERTOR

PART# AC-DC-12/24

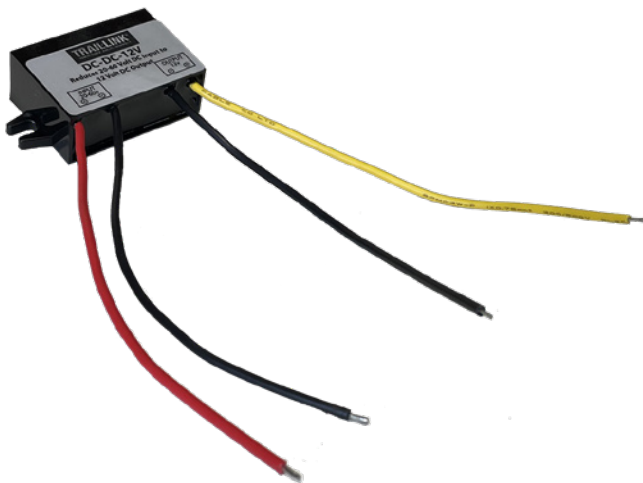


SPECIAL FEATURES

- Multivolt AC to DC Converter
- Input: DC Volts 10-32 or AC Volts 18-36
- Output: 12 Volt DC (10 AMP)
- Ideal to stabilise current for telematics or smart trailers
- Uniquely supports an AC input as well as DC input
- Regulated output up to 10 AMPs
- Designed for Australian use on smart and modern trailers
- Suitable for use with REDARC voltage reducers

DC REDUCER

PART# DC-DC-12V



SPECIAL FEATURES

- 20-60V AC to 12V DC Reducer
- Input: DC Volts 20-60
- Output: 12 Volt DC (10 AMP)
- Ideal to reduce DC current from 24+Volts to 12Volts
- Regulated output up to 10 AMPs
- Designed for Australian use on smart and modern trailers

BACK UP/REVERSE ALARM

PART# BUP-ALM



SPECIAL FEATURES

- 12V-24V
- High decibel output (102dB)
- For use in safety warning systems e.g. reverse buzzer
- Distinctive "BEEP BEEP" sound

SECTION 7: ACCESSORIES

BACK UP/REVERSE ALARM WITH AUTO ADJUSTING VOLUME FOR AMBIENT NOISE

PART# BUP-ALM-AA



SPECIAL FEATURES

- 12V-24V
- Adjusting decibel output (max 102dB)
- For use in safety warning systems e.g. reverse buzzer
- Auto-adjusting “BEEP BEEP” sound relative to ambient noise, e.g. quieter at night or in low-noise areas

BACK UP/REVERSE ALARM WITH WHITE NOISE SOUND

PART# BUP-ALM-WN

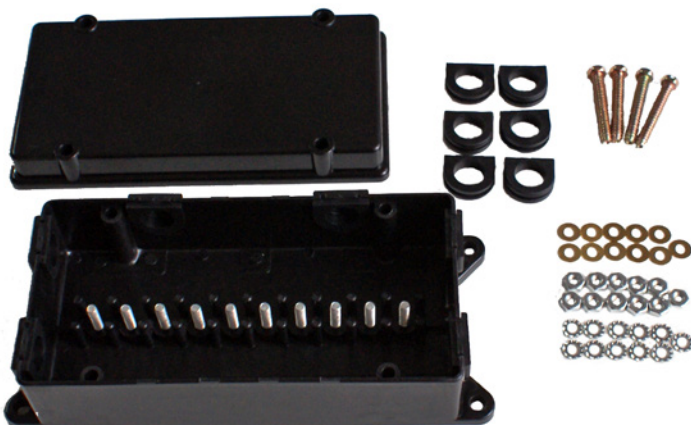


SPECIAL FEATURES

- 12V-24V
- High decibel output (102dB)
- For use in safety warning systems e.g. reverse buzzer
- Distinctive “SQUAWK SQUAWK”

JUNCTION BOX - BLACK - 10 POLE - WATER RESISTANT

PART# COMP-JB-10P



SPECIAL FEATURES

- Robust water resistant solution for multi-conductor interconnection
- 6 cable entry/exit points
- Used to simplify wiring or rewiring
- 10 Poles for up to 10 inputs and/or outputs
- Supplied with all grommets, bolt, nuts and washers set

SECTION 7: ACCESSORIES

JUNCTION BOX - BLACK - 7 POLE - WATER RESISTANT

PART# COMP-JB-7P



SPECIAL FEATURES

- Robust water resistant solution for multi-conductor interconnection
- 5 cable entry/exit points
- Used to simplify wiring or rewiring
- 7 Poles for up to 7 inputs and/or outputs
- Supplied with all grommets, bolt, nuts and washers set

STUD JUNCTION BLOCK - SINGLE POLE

PART# COMP-SB-01

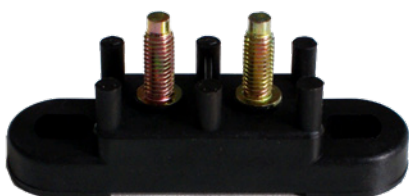


SPECIAL FEATURES

- Single conductor junction block
- Used for simple and safe wire joining
- Supplied with nuts and washers set

STUD JUNCTION BLOCK - DUAL POLE

PART# COMP-SB-02



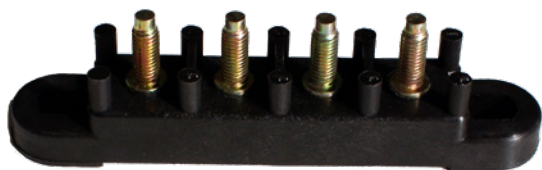
SPECIAL FEATURES

- Dual conductor junction block
- Used for simple and safe wire joining
- Supplied with nuts and washers set

SECTION 7: ACCESSORIES

STUD JUNCTION BLOCK - FOUR POLE

PART# COMP-SB-04

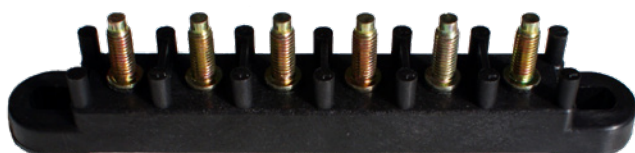


SPECIAL FEATURES

- 4 Pole conductor junction block
- Used for simple and safe wire joining
- Supplied with nuts and washers set

STUD JUNCTION BLOCK - SIX POLE

PART# COMP-SB-06



SPECIAL FEATURES

- 6 Pole conductor junction block
- Used for simple and safe wire joining
- Supplied with nuts and washers set

STUD JUNCTION BLOCK - EIGHT POLE

PART# COMP-SB-08



SPECIAL FEATURES

- 8 Pole conductor junction block
- Used for simple and safe wire joining
- Supplied with nuts and washers set

SECTION 7: ACCESSORIES

STUD JUNCTION BLOCK - TEN POLE

PART# COMP-SB-10



SPECIAL FEATURES

- 10 Pole conductor junction block
- Used for simple and safe wire joining
- Supplied with nuts and washers set

STUD JUNCTION BLOCK - TWELVE POLE

PART# COMP-SB-12



SPECIAL FEATURES

- 12 Pole conductor junction block
- Used for simple and safe wire joining
- Supplied with nuts and washers set

STUD JUNCTION BLOCK - FOURTEEN POLE

PART# COMP-SB-14



SPECIAL FEATURES

- 14 Pole conductor junction block
- Used for simple and safe wire joining
- Supplied with nuts and washers set

SECTION 8: LIGHTS

LIGHTS

Trail-Link's new age LED lights (lights with a difference) are imported from Poland and possess impressive specifications along with high IP ratings and E-MARK certification (ECE)

In addition to the new age technology and excellent quality, they boast spectacular viewing effects.

Our range includes a variety of functional lights and a **NEON** marker light range – never before seen in Australia.

LED MULTI FUNCTION REAR LAMP - 12/24V - UNIVERSAL

PART# WAS-1123-DD-LP



SPECIAL FEATURES

- LED Rear lamp with **dynamic indicator** to the direction of the turn, as well as:
 - Stop
 - Tail light
 - Reverse light
 - Reflectors
 - Fog
- 12–24 Volt compatible
- 200cm cable length
- IP66/68
- ECE/ADR approved for use in Australia

SM1- FLASHER DUAL CHANNEL CONTROLLER

PART# WAS-1141-1-DUAL



SPECIAL FEATURES

- Controls indicator flashing of side markers across vehicle
- Turns side markers to into indicators to enhance driver and road user visibility and intention to turn
- Highly visible system to enhance Left or Right indication
- Dual controller splits and controls Left separate to Right
- To be assembled close to front of trailer, away from fuel tanks/batteries
- 12–24 Volt compatible
- ECE/ADR approved

SECTION 7: ACCESSORIES

SURFACE MOUNT WORK LAMPS - 12/24V - NEON

PART# WAS-229N



SPECIAL FEATURES

- Surface mount work lamp
- Neon lens (clear also available)
- Flat or 45° mounting options supplied
- 30 LED source
- 132.9mm x 43.9mm x 25.4mm/44.5mm
- 120mm hole-to-hole length
- 250cm cable length
- 12–24 Volt compatible
- IP6K9K
- ECE/ADR approved

SURFACE MOUNT WORK LAMPS - 12/24V - CLEAR

PART# WAS-229



SPECIAL FEATURES

- Flush mount work lamp
- Clear lens (Neon also available)
- Flat or 45° mounting options supplied
- 30 LED source
- 132.9mm x 43.9mm x 25.4mm/44.5mm
- 120mm hole-to-hole length
- 250cm cable length
- 12–24 Volt compatible
- IP6K9K
- ECE/ADR approved

NUMBER PLATE LAMP - 12/24V

PART# WAS-244



SPECIAL FEATURES

- Registration / number plate LED lamp
- Clear lens
- 2 Screw posts for mounting
- 82.5mm x 39mm x 31mm
- 44mm post-to-post length
- 20cm cable length
- 12–24 Volt compatible
- IP66/68
- ECE/ADR approved
- (Dangerous Goods version also available on request)

SECTION 7: ACCESSORIES

MULTIFUNCTIONAL REAR LIGHTS (12–24V)

PART# WAS-410



SPECIAL FEATURES

- Multifunctional rear strip light
- IP66/68 12–24v
- Indicator, tail and brake

FRONT-REAR END OUTLINE LAMP (LEFT)

PART# WAS-497L



SPECIAL FEATURES

- Front and Rear Outline LED lamp
- Left-hand Mount Stalk
- Rear = red ; Front = white
- Flexible rubber arm to prevent snapping
- 190mm x 164mm x 48.6mm
- 75mm hole-to-hole length
- 21cm cable length
- 12–24 Volt compatible
- IP66/68
- ECE/ADR approved

FRONT-REAR END OUTLINE LAMP (RIGHT)

PART# WAS-497R



SPECIAL FEATURES

- Front and Rear Outline LED lamp
- Right-hand Mount Stalk
- Rear = red ; Front = white
- Flexible rubber arm to prevent snapping
- 190mm x 164mm x 48.6mm
- 75mm hole-to-hole length
- 21cm cable length
- 12–24 Volt compatible
- IP66/68
- ECE/ADR approved

SECTION 8: LIGHTS

SCREW MOUNT WORK LAMP WITH ON/OFF SWITCH - 12/24V

PART# WAS-684



SPECIAL FEATURES

- Work Flood Lamp in White
- Efficient LED for max illumination with min power consumption (1770 lm)
- Metal bracket screw mounting
- Adjustable angles for directional light
- On/Off Toggle Switch on Lamp
- 250cm cable length
- 12–24 Volt compatible
- IP66/68
- ECE/ADR approved

SIDE POSITION LAMP -12-24VOLT - AMBER

PART# WAS-708



SPECIAL FEATURES

- Amber side position light
- 3 LED points
- 61mm hole-to-hole length
- 83.8mm x 24.2mm x 10.4mm
- IP66/68 12–24v
- 25cm cable

REAR POSITION LAMP -12-24VOLT - RED

PART# WAS-709



SPECIAL FEATURES

- Red rear position light
- 3 LED points
- 61mm hole-to-hole length
- 83.8mm x 24.2mm x 10.4mm
- IP66/68 12–24v
- 25cm cable

SECTION 8: LIGHTS

FRONT POSITION LAMP -12-24VOLT - WHITE

PART# WAS-710



SPECIAL FEATURES

- White front position light / Interior strip light
- 3 LED points
- 61mm hole-to-hole length
- 83.8mm x 24.2mm x 10.4mm
- IP66/68 12-24v
- 25cm cable

SIDE POSITION LIGHT - AMBER - 5 LED POINTS (12/24V)

PART# WAS-711



SPECIAL FEATURES

- Amber side position light
- 5 LED points
- 61mm hole-to-hole length
- 83.8mm x 24.2mm x 10.4mm
- IP66/68 12-24v
- 23cm cable

REAR POSITION LIGHT - RED- 5 LED POINTS (12/24V)

PART# WAS-712



SPECIAL FEATURES

- Red rear position light
- 5 LED points
- 61mm hole-to-hole length
- 83.8mm x 24.2mm x 10.4mm
- IP66/68 12-24v
- 23cm cable

SECTION 8: LIGHTS

FRONT POSITION LIGHT - CLEAR - 5 LED POINTS (12/24V)

PART# WAS-713



SPECIAL FEATURES

- White front position light / Interior strip light
- 5 LED points
- 61mm hole-to-hole length
- 83.8mm x 24.2mm x 10.4mm
- IP66/68 12-24v
- 23cm cable

SIDE POSITION COURTESY LAMP (AMBER) - 9 LED - 12-24VOLT

PART# WAS-717



SPECIAL FEATURES

- Amber side position light
- 9 LED points
- 213.4mm hole-to-hole length
- 238mm x 20.6mm x 10.4mm
- IP66/68 12-24v
- 39cm cable

REAR POSITION COURTESY LAMP (RED) - 9 LED - 12-24VOLT

PART# WAS-718



SPECIAL FEATURES

- Red rear position light
- 9 LED points
- 213.4mm hole-to-hole length
- 238mm x 20.6mm x 10.4mm
- IP66/68 12-24v
- 39cm cable

SECTION 8: LIGHTS

INTERIOR STRIP LIGHT - SLIMLINE 9 LED - 1-24VOLT - 238MM

PART# WAS-719



SPECIAL FEATURES

- White front position light / Interior strip light
- 9 LED points
- 213.4mm hole-to-hole length
- 238mm x 20.6mm x 10.4mm
- IP66/68 12-24v
- 39cm cable

FRONT POSITION COURTESY LAMP - 12 LED - 12-24VOLT

PART# WAS-722



SPECIAL FEATURES

- White front position light / interior strip light
- 12 LED points
- 213.4mm hole-to-hole length
- 238mm x 20.6mm x 10.4mm
- IP66/68 12-24v
- 39cm cable

INTERIOR LIGHTING LAMP - 12VOLT - 39 CM - 12 LED - 301 LM - WHITE

PART# WAS-728



SPECIAL FEATURES

- Interior strip light
- 12 LED points
- 301Lm
- 213.4mm hole-to-hole length
- 238mm x 20.6mm x 10.4mm
- IP66/68 12-24v
- 39cm cable

SECTION 8: LIGHTS

NEON-LED FRONT MARKER LAMP - WHITE 12-24VOLT

PART# WAS-782



SPECIAL FEATURES

- Front marker lamp - White
- NEON Glow LED light
- 67mm hole-to-hole
- 80.5mm x 60.5mm x 25mm
- IP66/68 12-24v
- 20cm cable

NEON-LED REAR MARKER LAMP - RED 12-24VOLT

PART# WAS-783



SPECIAL FEATURES

- Rear marker lamp - Red
- NEON Glow LED light
- 67mm hole-to-hole
- 80.5mm x 60.5mm x 25mm
- IP66/68 12-24v
- 20cm cable

NEON-LED SIDE MARKER LAMP - AMBER 12-24VOLT

PART# WAS-784



SPECIAL FEATURES

- Side marker lamp - Amber
- NEON Glow LED light
- 67mm hole-to-hole
- 80.5mm x 60.5mm x 25mm
- IP66/68 12-24v
- 20cm cable

SECTION 8: LIGHTS

9 INCH LED DRIVING LIGHT WITH DAYTIME RUNNING LIGHT

PART# WAS-872



SPECIAL FEATURES

- 9" Driving Light with
 - Daytime running lights
 - Single mounting hole
- Adjustable angle
- 245mm x 132mm
 - IP66/68 12-24v
 - 300cm cable
 - (available in 130,000 or 215,000 candelas)

TAIL LIFT WARNING LAMP - ROUND

PART# WAS-W151



SPECIAL FEATURES

- Tailgate/lift safety warning lamp
- High strength and load resistance (4tonne)
- Round shape
- Thin profile (13mm)
- Amber flashing warning lights
- Dual function as indicators
- 80mm hole-to-hole (106mm x 92mm x 13mm)
- IP66/68 12-24v
- 300cm cable

TAIL LIFT WARNING LAMP - 90 DEGREE ANGLE

PART# WAS-W152



SPECIAL FEATURES

- Tailgate/lift safety warning lamp
- High strength and load resistance (4tonne)
- 90degree angle shape
- Thin profile (13mm)
- Amber flashing warning lights
- Dual function as indicators
- 69mm hole-to-hole (96.5mm x 76mm x 13mm)
- IP66/68 12-24v
- 300cm cable

SECTION 9: IN-STORE/POINT OF SALE

IN STORE MERCHANDISING POINT OF SALE OPTIONS

- Stocked Stand
- Corflute sign

STOCKED STAND



TRAILLINK-STAND

SPECIAL FEATURES

- Fully stocked display stand for in-store promotion and storage
- Sturdy peg-board supplied with durable hooks and transparent ticket holders
- 1000mm x 80mm x 2000mm
- Items supplied include our top 30 items ready to sell

SIGNAGE

CORFLUTE SIGN



Handwriting practice lines consisting of 20 sets of three horizontal dotted lines.

TRAIL-LINK

17B Yiannis Court
Springvale
Victoria
3171
Australia

Tel: +61 (0)3 9886 9004
Fax: +61 (0)3 9886 9006
E-mail: sales@trail-link.com.au

www.trail-link.com.au